



Appendix U

Community Meeting Plans and Summaries

June 2021



2019 Gullah Celebration

Community Event

Event Information

Time/Date: 11:00 AM to 5:00 PM, February 16, 2019

Location: Historic Honey Horn
70 Honey Horn Dr, Hilton Head Island, SC 29926

Event Website: <http://gullahcelebration.com/gullah-events/the-gullah-market-an-arts-crafts-and-food-expo>

Event Summary

The first community pop-up event for the US 278 Corridor Improvements project was the 2019 Gullah Celebration. This celebration of Gullah arts, crafts, and food typically draws in 1,500-2,000 people a day. The purpose of the US 278 Corridor Improvement project team being there was to provide information about the project and learn more about the Hilton Head Island and Bluffton communities.

The project team had information and project branded tote bags to give-away, donated by Beaufort County. Approximately 230 tote bags were given out. However, many large groups only took a couple of bags. The SCDOT booth was set up in a prime location at the front of the celebration. The combination of the prominent location and the tote bags drew people in. Approximately 100 in-depth conversations took place between project team members and the community, and the team received 43 email/mail sign-ups. People expressed great interest in the updates.

Overall the event was successful. The community was welcoming, and the team received positive feedback. Many people expressed appreciation that SCDOT was in the community.

Staff Attendees

The following staff managed the event.

Organization	Person
SCDOT	Nicole Riddle
KCI	Eric Burgess
KCI	Phil Leazer
CDM Smith	Ariel Weyandt
CDM Smith	Michael Belvin

CDM Smith	Amy Livingston
3 Oaks	LaTonya Derrick





2019 Mt. Calvary Missionary Baptist Church Homecoming

Community Event Summary

Event Information

Time: 10:00 AM to 3:00 PM / August 17, 2019

Location: Mt. Calvary Missionary Baptist Church
382 Squire Pope Rd, Hilton Head Island, SC 29925

Contact: Carolyn Grant, Town of Hilton Head Island

**MCMBC HOMECOMING
2K19 CALVARY EDITION
AUGUST 16TH-18TH**

16 AUG FRIDAY **FREE GIVEAWAYS**
FRIDAY AND SATURDAY

MOVIE NIGHT-BREAKTHROUGH
Movie Refreshments served from 6-7 PM
Movie starts at 7PM

17 AUG SATURDAY **HOMECOMING 2K19 COOKOUT** 10 AM-3 PM
Healthcare Screening 10-11 AM
Vendors - Cookout Style - Fire & Game Trucks
Bouncy House - Frozen Icy's - Back to School Supplies
Book signing by Rev. Simmons

18 AUG SUNDAY **MORNING WORSHIP SERVICE**
10:00 AM

ALL EVENTS HELD ON CHURCH GROUNDS:
382 Squire Pope Road | Hilton Head Island, SC 29925

WEAR YOUR SORORITY, FRATERNITY, MT. CALVARY, SCHOOL
SPIRIT, GROUP OR ORGANIZATION SHIRT ALL WEEKEND

REV. DR. DEONIA SIMMONS - SENIOR PASTOR

Event Summary

The project team was set to attend the Mt. Calvary Missionary Baptist Church Homecoming celebration on Saturday, August 17, 2019 to distribute project information and gather input from the community. However, the weather called for heavy rain on the day of the event. The event ended up being cancelled because there was no rain venue available. The project team did not attend the event but was able to send flyers/bulletin inserts to Carolyn Grant who distributed them to the Mt Calvary Missionary Baptist Church congregation and others.



2019 Historic Bluffton Arts and Seafood Festival

Community Event Summary

Event Information

Date/ Time: Saturday, October 19th, 10:00 AM – 5:00 PM (Setup: 7:30-9 AM)

Location: May River Road Entrance to the Festival just next to Corner Perk Coffee

Event Website: <https://www.blufftonartsandseafoodfestival.com/index.php?page=events>

Event Summary

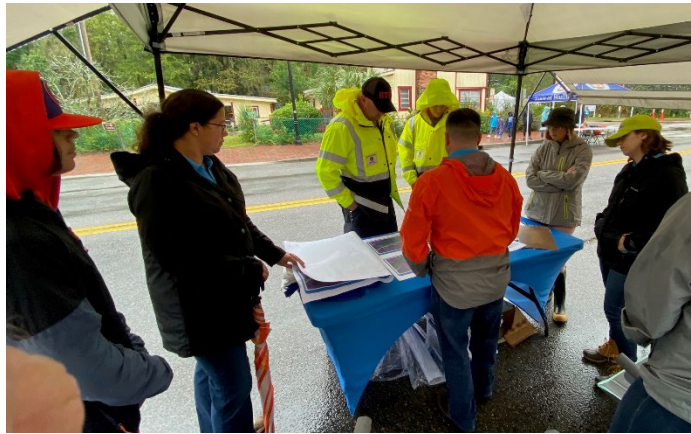
The Bluffton Arts and Seafood Festival typically draws crowds of over 30,000 people, with about 15,000 of those being locals. However, on the festival weekend in Fall 2019, a tropical storm was set to hit South Carolina's coast. The event still took place according to plan. The US 278 Corridor Improvements project team still attended the event but had fewer team members present than originally planned. The SCDOT booth was set up near the entrance of the festival as people walked in. The turn-out at the festival was much lower than expected due to the weather. The team talked to about 11 people total over the first two and a half hours. After the rain and wind picked-up in strength, the team decided to leave the festival early (12:30pm) for safety considerations.

The team was prepared with laptops, roll plots of the alternatives, project newsletters, comment sheets, and community impact surveys. However, due to the weather, many of these materials were not brought out.

Attendees

The following staff managed the event.

Organization	Person
SCDOT	Craig Winn
SCDOT	Megan Groves
KCI	Eric Burgess
KCI	Phil Leazer
CDM Smith	Ariel Weyandt
CDM Smith	Amy Livingston
3 Oaks	Geni Theriot





2019 August Small Business Outreach

Materials:

- Clipboards/Pens
- Flyers – English and Spanish
- Newsletters – English and Spanish
- Community Impact Survey – English & Spanish
- Sign-up sheet for project updates
- Business Cards
- Conversation Summary Log
 - Take pictures of everywhere we go
 - Document everywhere we go, the response, and what materials they take

Talking Points

- Project Purpose
- Project Update (where we are)
- Upcoming PIM/VPIM
- Community Impact Survey
- Getting Involved
- Sign up for Email Alerts

Area:

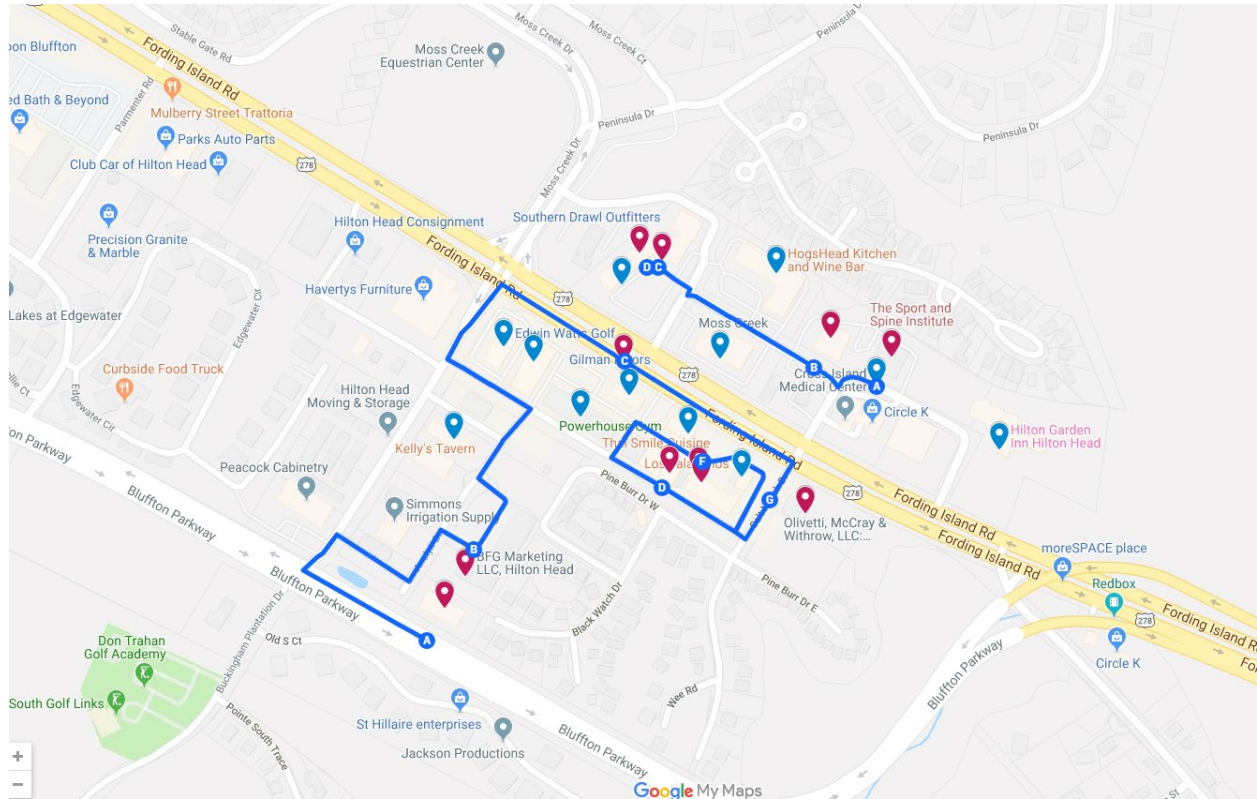
- Canvassing small businesses in the 1000 square foot buffer study area from Moss Creek Drive in Bluffton to Spanish Wells Road in Hilton Head Island - Targeting EJ areas first + recognizing that neighborhood boundaries go outside of 1000 foot buffer



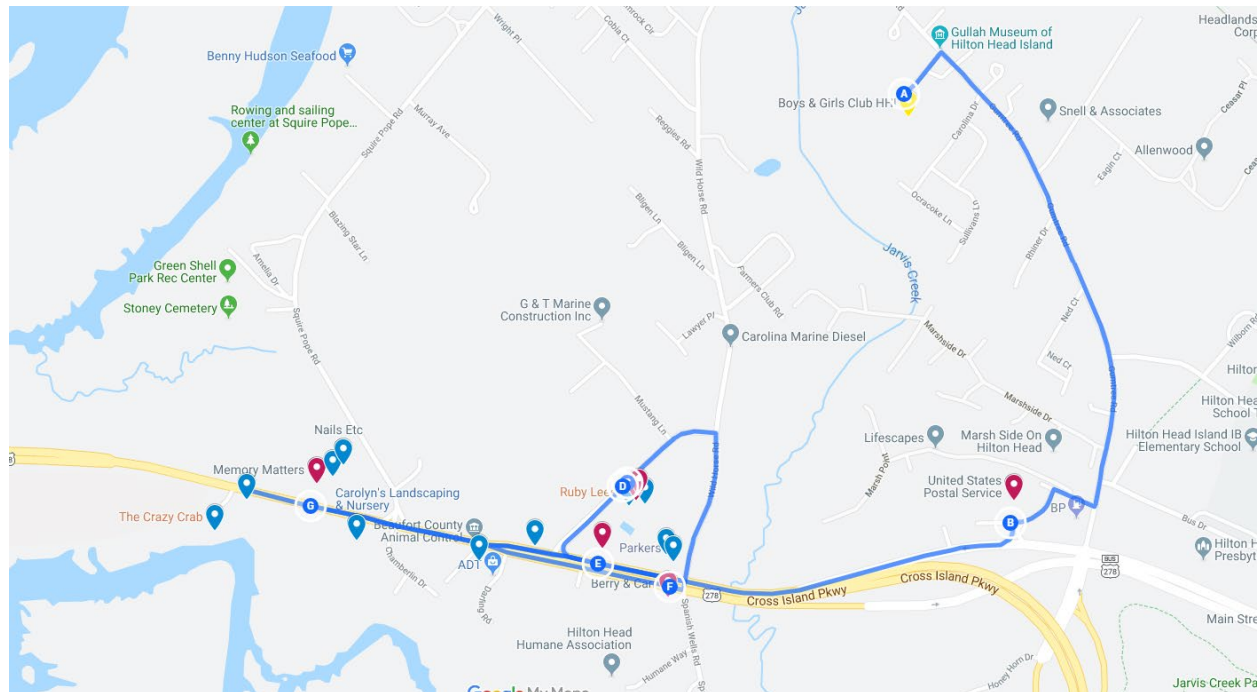
Locations of Small Businesses on Google Maps:

- Red indicates a priority for Thursday because it is closed on Saturday. Blue is open on Saturday or we do not know the hours.
- Will also go into businesses that are not located on the Map, but we see the day of outreach

Bluffton Small Businesses



Hilton Head Island Small Businesses



Locations on Google Maps:

https://www.google.com/maps/d/viewer?hl=en&mid=1to0k55vGMTnZKimKcoR_4Zl4sF6_jB2u&ll=32.23676330000002%2C-80.80841129999999&z=14

Highlight indicates a priority because it is closed on Saturday

Name of Business	Address	Hours	When to go:
Edwin Watts Golf	1 Buckingham Plantation Dr, Bluffton, SC 29910	9AM – 6 PM, Weekdays + Saturday	
Coastal Home	1528 Fording Island Rd, Hilton Head Island, SC 29926	10AM – 6PM, Weekdays + Saturday	
Kelly's Tavern	11 Buckingham Plantation Dr #b, Bluffton, SC 29910	11AM – 10 PM, Weekdays + Saturday	
Powerhouse Gym	1530 Fording Island Rd, Hilton Head Island, SC 29926	24 hours; Probably not staffed 24 hours however	
Muscles - Fitness & More	1530 Fording Island Rd #111, Hilton Head Island, SC 29926	8 AM – 8:30 Weekdays, 9AM – 4PM Saturday	On the Way into Town
Gilman Floors	1532 Fording Island Rd, Hilton Head Island, SC 29926	9AM – 5PM, Weekdays + Saturday	
Thai Smile Cuisine	1534 Fording Island Rd, Hilton Head Island, SC 29926	12PM – 3:PM; 5PM-9PM, Weekdays + Saturday	
Atlantic States Management	1536 Fording Island Rd #201, Bluffton, SC 29910	8AM – 5PM, closed Saturday	On the Way into Town
BFG Marketing LLC, Hilton Head	6 Anolyn Ct, Bluffton, SC 29910	9AM – 6PM, closed Saturday	On the Way into Town
Clover Glass of Bluffton Inc	2 Anolyn Ct # A, Bluffton, SC 29910	8AM – 4:30PM, closed Saturday	On the Way into Town
Coastal Employment	1536 Fording Island Rd #108, Hilton Head Island, SC 29926	7:30AM – 5PM, closed Saturday	On the Way into Town
Appliances By Design	1536 Fording Island Rd, Hilton Head Island, SC 29926	9AM – 5PM, closed Saturday	On the Way into Town
Los Jalapenos	1540 Fording Island Rd, Hilton Head Island, SC 29926	11:30AM-10PM	
Olivetti, McCray & Withrow, LLC: Attorneys and Counselors at Law	1544 Fording Island Rd, Hilton Head Island, SC 29926	8:30AM – 5PM, closed Saturday	On the Way into Town

Olive & Fig Mediterranean Kitchen	1533 Fording Island Rd #326, Hilton Head Island, SC 29926	11AM – 9PM	
Southern Drawl Outfitters	1533 Fording Island Rd, Hilton Head Island, SC 29926	6AM-6PM Thursday, 6AM – 3PM	On the Way out of Town (after Hilton Head)
John B Rush - Ameriprise Financial Services, Inc.	1533 Fording Island Rd Ste 328, Hilton Head Island, SC 29926	9AM – 5PM, closed Saturday	On the Way out of Town (after Hilton Head)
Moss Creek Golf Club	1532 Fording Island Rd, Hilton Head Island, SC 29926	No hours available	
HogsHead Kitchen and Wine Bar	1555 Fording Island Rd, Hilton Head Island, SC 29926	5:00PM – 10PM, closed Saturday	
Moss Creek Orthopedic Urgent Care	15 Moss Creek Village, Hilton Head Island, SC 29926	9:00AM – 4PM, closed Saturday	On the Way out of Town (after Hilton Head)
The Sport and Spine Institute	15 Moss Creek Village, Hilton Head Island, SC 29926	8AM – 5PM, closed Saturday	On the Way out of Town (after Hilton Head)
Center for Hyperbarics and Wound Care - Bluffton/Hilton Head	19 Moss Creek Village Suite B4, Hilton Head Island, SC 29926	8AM – 5PM, closed Sunday	
Hilton Garden Inn Hilton Head	1575 Fording Island Rd, Hilton Head Island, SC 29926	24 hours	
The Richardson Group - Property Management	3 Harbour Psge, Hilton Head Island, SC 29926	No hours available	
Marine Sales and Solutions, LLC	11 Millwright Dr, Hilton Head Island, SC 29926	No hours available	
The Crazy Crab	104 William Hilton Pkwy, Hilton Head Island, SC 29926	11AM – 10PM	
Memory Matters	117 William Hilton Pkwy, Hilton Head Island, SC 29926	9AM – 3PM, closed Saturday	After Boys and Girls Club
Salon Salon	117 William Hilton Pkwy, Hilton Head Island, SC 29926	No hours available	
Nails Etc	117 William Hilton Pkwy # J, Hilton Head Island, SC 29926	No hours available	No Business

Carolyn's Landscaping & Nursery	126 William Hilton Pkwy, Hilton Head Island, SC 29926	7AM – 4PM	
Beaufort Fishing Guide	142 William Hilton Pkwy, Hilton Head Island, SC 29926	No hours available – not sure if real business here?	
Custom Upholstery-Willie Young	149 William Hilton Pkwy, Hilton Head Island, SC 29926	8AM – 4:30PM, closed Saturday	
Curry Printing HHL, Inc.	157 William Hilton Pkwy, Hilton Head Island, SC 29926	9AM – 5PM, closed Saturday	After Boys and Girls Club
Ruby Lees	46 Old Wild Horse Rd, Hilton Head Island, SC 29926	Open Saturday and Thursday Only 5-11PM	
G-Men's Barber Shop	46 Old Wild Horse Rd, Hilton Head Island, SC 29926	No hours available	
Litter Box Thrift Store	46 Old Wild Horse Rd #5-6, Hilton Head Island, SC 29926	10AM – 4PM	After Boys and Girls Club
Animal Care Clinic of Hilton Head	46 Old Wild Horse Rd, Hilton Head Island, SC 29926	9AM-6PM Thursday, 9AM-12PM Saturday	After Boys and Girls Club
Lawton Oil Co	165 William Hilton Pkwy, Hilton Head Island, SC 29926	No hours available	
Parkers	165 William Hilton Pkwy, Hilton Head Island, SC 29926	24 hours	
Berry & Carr	2 Spanish Wells Rd, Hilton Head Island, SC 29926	8:30-5:30PM, closed Saturday	After Boys and Girls Club
United States Postal Service	213 William Hilton Pkwy, Hilton Head Island, SC 29926	8:30-5PM Weekdays, 9AM – 12:30PM Saturday	N/A not in study area
Coastal Discovery Museum	70 Honey Horn Dr, Hilton Head Island, SC 29926	9AM - 4:30PM; We can email them if needed. We have their contact and they're technically not in the zone	N/A not in study area

Daufuskie Island Ferry	35 Fording Island Rd, Bluffton, SC 29910	No hours available - Probably not a building, but wanted it as an option on the list; We know the drop off is a County building. Might not hurt to reach out to them through the county to post in this?	N/A
Jarvis Creek Water Sports	104 William Hilton Pkwy, Hilton Head Island, SC 29926	No hours available - Probably not a building, but wanted it as an option on the list	No Building
BP/Circle K	1610 Fording Island Rd, Hilton Head Island, SC 29926		
Shell/Circle K	1565 Fording Island Rd, Bluffton, SC 29909		

US 278 Corridor Improvements Hilton Head Open House

October 17, 2019



THE NEPA PROCESS | US 278 CORRIDOR IMPROVEMENTS

Public Engagement

Start the Environmental Assessment

Public Information Meeting **1**

Perform Technical Studies **2**

Develop Alternatives **3**

Analyze Alternatives **4**

Second Public Information Meeting **5**

Develop Preferred Alternative **6**

Prepare Environmental Assessment **7**

Public Hearing **8**

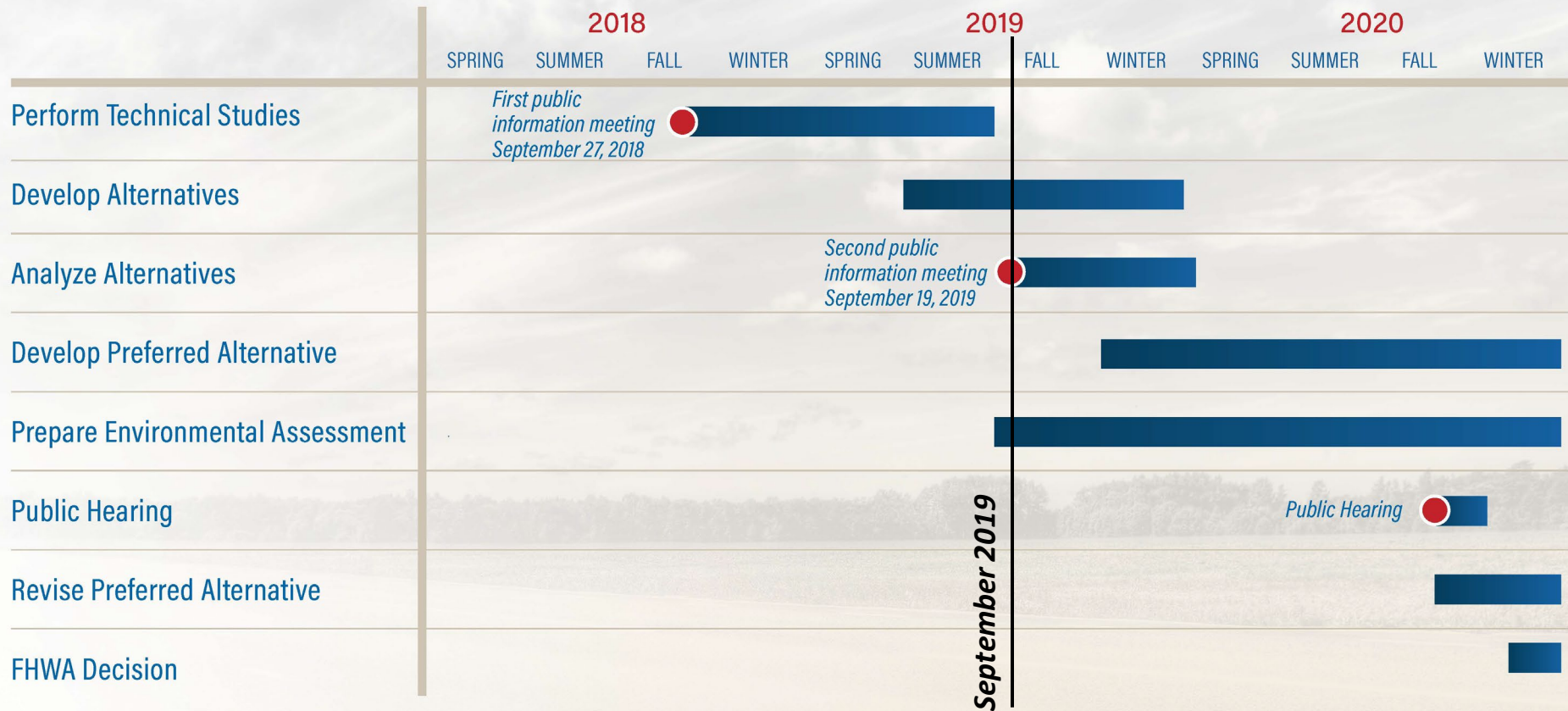
Revise Alternative **9**

FHWA Decision **10**

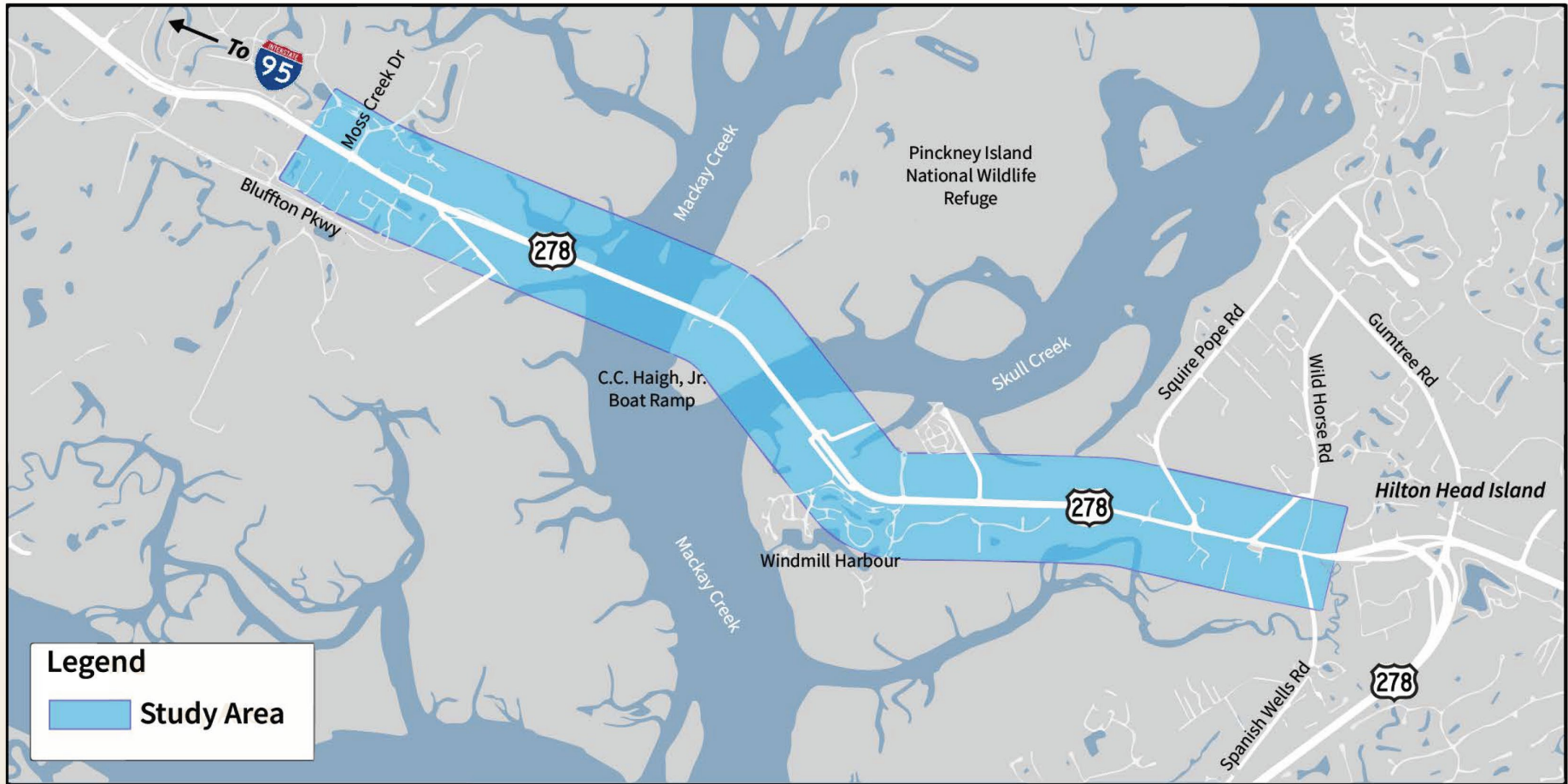
Ten Steps of the
NEPA Process



ANTICIPATED NEPA SCHEDULE



STUDY AREA



PROJECT PURPOSE

The purpose of this project is to **address structural deficiencies** at the existing eastbound Mackay Creek bridge, as well as **increase capacity** and **reduce congestion** along US 278 from Moss Creek Drive to Spanish Wells Road.



UNDERSTANDING TRAFFIC

How do we measure congestion today and in the future?

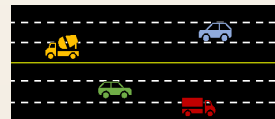
Traffic Counts ▶ Traffic counts were conducted August 8, 2018 during Peak times: 7-9 AM and 4-6 PM. During these times, counts were collected for cars, trucks, and buses.

Level of Service (LOS)

Free flow	LOS A	
Stable flow (slight delays)	LOS B	
Stable flow (acceptable delays)	LOS C	
Approaching unstable flow (tolerable delays)	LOS D	
Unstable flow (intolerable delays)	LOS E	
Forced flow (congested, queues fail to clear)	LOS F	

What does this mean? What capacity do we need?

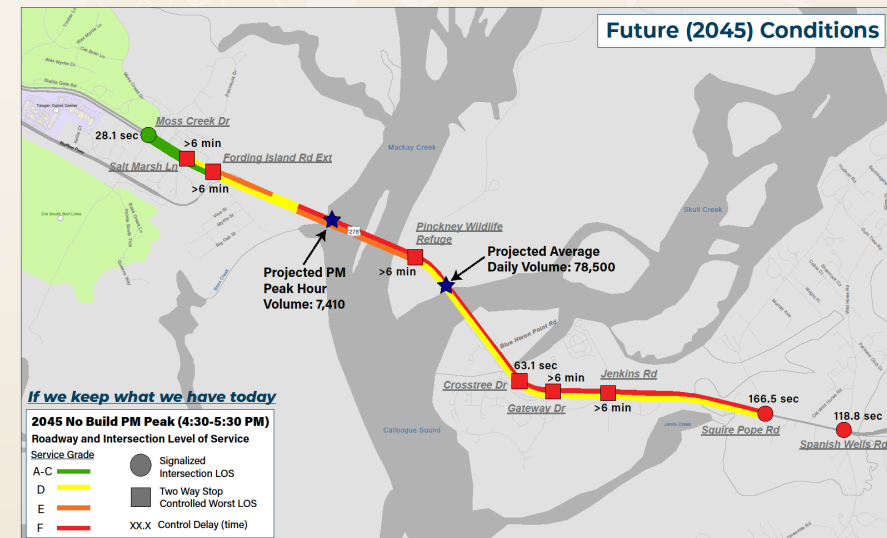
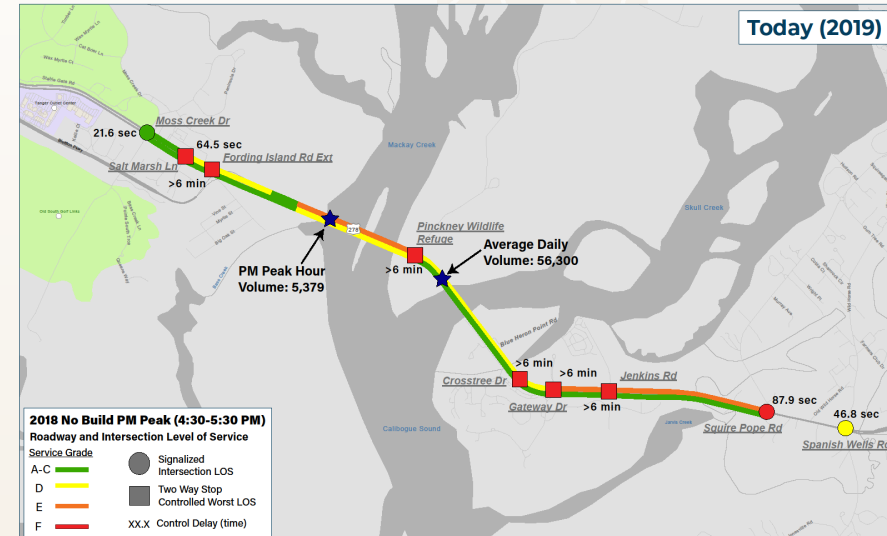
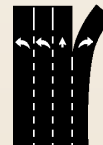
Capacity Needs (Prior to the Environmental Assessment) ▶ 3 lanes in each direction on the mainline
Why? Having only 2 lanes in each direction on US 278 in the year 2045 when traffic counts are projected to exceed 72,600 vehicles per day would result in a LOS E.



Design Guidelines ▶ Roadway capacity design is based on a 1.19% annual growth rate



- ▶ Improving intersection design
- Signal timing
- Signage
- Turn lanes

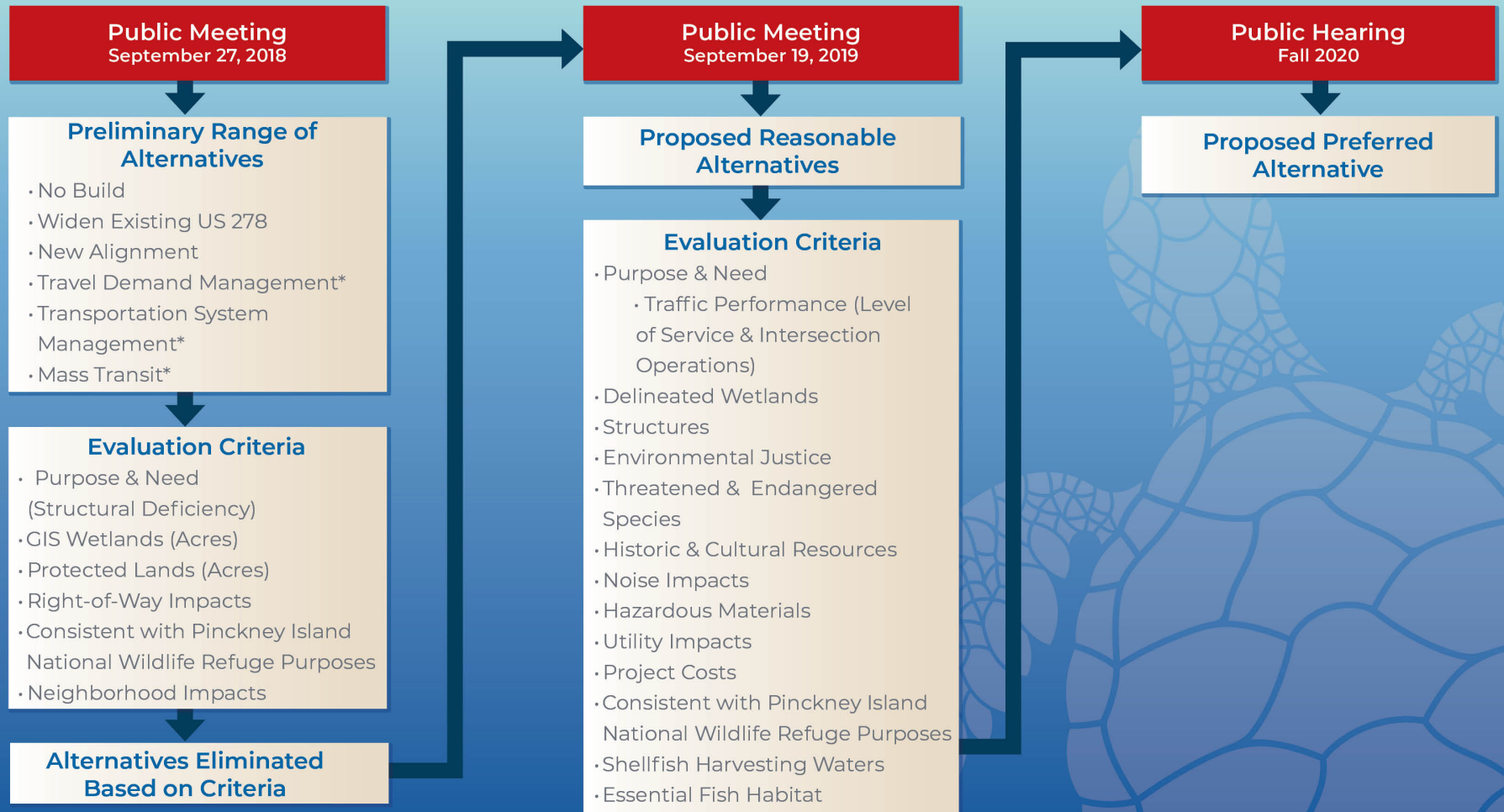


Regional Travel Demand Model used to forecast future population, household, and employment growth rates.

Preliminary Range of Alternatives



US 278 CORRIDOR IMPROVEMENTS ALTERNATIVES DEVELOPMENT FLOWCHART



**Please note that these are stand-alone alternatives. During Alternative Development, elements of these may be included with the Reasonable Alternatives and/or the Proposed Preferred Alternative*

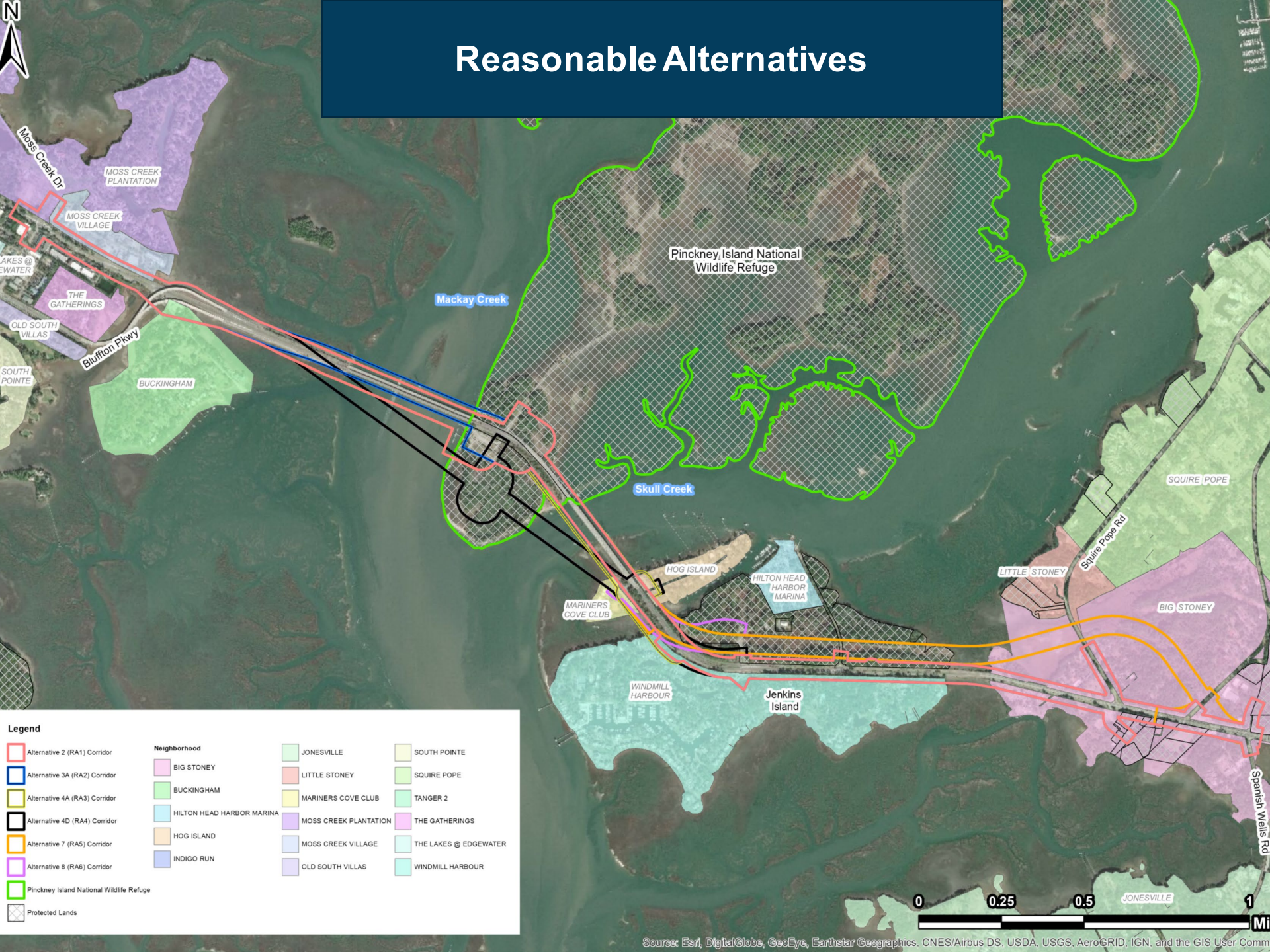
ALTERNATIVES MATRIX

US 278 Corridor Improvements - Preliminary Range of Alternatives																					
Evaluation Criteria		Alternatives																			
		No Build	1	2	3a	3b	4a	4b	4c	4d	4e	4f	5a	5b	6a	6b	6c	6d	6e	7	8
Addresses Structural Deficiencies to Eastbound over Mackay Creek	Yes / No	No	Yes	Yes	Yes	Yes	Yes	Yes	Yes	Yes	Yes	Yes	Yes	Yes	Yes	Yes	Yes	Yes	Yes	Yes	Yes
GIS-based Wetlands (Acres)	Freshwater	0	1	3	3	4	3	5	3	3	2	1	13	1	15	8	2	6	6	8	7
	Critical Area	0	29	45	37	79	49	68	40	37	38	45	78	94	92	93	86	116	116	59	46
	TOTAL Wetlands	0	31	48	40	83	53	72	43	40	40	45	91	95	107	101	88	122	122	67	54
Right-of-Way Impacts	Number of Tracts	0	30	124	124	131	130	131	143	132	130	126	97	47	166	120	133	83	58	81	84
	Number of Acres	0	29	82	80	97	87	102	89	88	86	57	128	56	163	98	98	110	87	108	110
Neighborhoods	Number of Neighborhoods	0	3	7	7	7	7	7	7	7	7	5	6	6	8	10	10	11	7	7	8
	Names	N/A	Buckingham, Moss Creek Plantation, Moss Creek Village	Big Stoney, Buckingham, Hog Island, Mariners Cove Club, Moss Creek Plantation, Moss Creek Village, Windmill Harbour	Big Stoney, Buckingham, Hog Island, Mariners Cove Club, Moss Creek Plantation, Moss Creek Village, Windmill Harbour	Big Stoney, Buckingham, Hog Island, Mariners Cove Club, Moss Creek Plantation, Moss Creek Village, Windmill Harbour	Big Stoney, Buckingham, Hog Island, Mariners Cove Club, Moss Creek Plantation, Moss Creek Village, Windmill Harbour	Big Stoney, Buckingham, Hog Island, Mariners Cove Club, Moss Creek Plantation, Moss Creek Village, Windmill Harbour	Big Stoney, Buckingham, Hog Island, Mariners Cove Club, Moss Creek Plantation, Moss Creek Village, Windmill Harbour	Big Stoney, Buckingham, Hog Island, Mariners Cove Club, Moss Creek Plantation, Moss Creek Village, Windmill Harbour	Big Stoney, Buckingham, Hog Island, Mariners Cove Club, Moss Creek Plantation, Moss Creek Village, Windmill Harbour	Big Stoney, Buckingham, Hog Island, Mariners Cove Club, Moss Creek Plantation, Moss Creek Village, Windmill Harbour	Big Stoney, Buckingham, Hog Island, Mariners Cove Club, Moss Creek Plantation, Moss Creek Village, Windmill Harbour	Big Stoney, Buckingham, Hog Island, Mariners Cove Club, Moss Creek Plantation, Moss Creek Village, Windmill Harbour	Commerce Place, Fern Lakes, Foremn Hill Estates, Indigo Run, Lake Linden Estates, Old House Creek, Spanish Wells, Tanager 2, The Gatherings, The Lakes at Edgewater	Buckingham, Indigo Run, Moss Creek Plantation, Moss Creek Village, Old South Villas, Old House Creek, Spanish Wells, Tanager 2, The Gatherings, The Lakes at Edgewater	Buckingham, Indigo Run, Moss Creek Plantation, Moss Creek Village, Old South Villas, Old House Creek, Spanish Wells, Tanager 2, The Gatherings, The Lakes at Edgewater	Big Stoney, Buckingham, Indigo Run, Moss Creek Plantation, Moss Creek Village, Old South Villas, Old House Creek, Spanish Wells, Tanager 2, The Gatherings, The Lakes at Edgewater	Big Stoney, Buckingham, Indigo Run, Moss Creek Plantation, Moss Creek Village, Old South Villas, Old House Creek, Spanish Wells, Tanager 2, The Gatherings, The Lakes at Edgewater	Big Stoney, Buckingham, Hog Island, Mariners Cove Club, Moss Creek Plantation, Moss Creek Village, Windmill Harbour	Big Stoney, Buckingham, Hog Island, Little Stoney, Mariners Cove Club, Moss Creek Plantation, Moss Creek Village, Windmill Harbour
Protected Lands	Yes / No	No	Yes	Yes	Yes	Yes	Yes	Yes	Yes	Yes	Yes	Yes	Yes	Yes	Yes	No	No	Yes	Yes	Yes	Yes
	Number of Tracts	0	1	5	5	5	5	5	5	5	5	4	4	3	2	0	0	2	3	5	5
	Number of Acres	0	15	37	33	48	38	49	34	36	34	11	81	72	31	0	0	48	60	54	55
Consistent with Pinckney Island National Wildlife Refuge Purposes	Consistent, Potentially Consistent, or Not Consistent	Consistent	Consistent	Consistent	Consistent	Potentially Consistent	Consistent	Potentially Consistent	Potentially Consistent	Potentially Consistent	Potentially Consistent	Potentially Consistent	Not Consistent	Not Consistent	Consistent	Consistent	Consistent	Consistent	Consistent	Potentially Consistent	Potentially Consistent
Carried Forward to Reasonable	Yes / No	Yes	No	Yes	Yes	No	Yes	No	No	Yes	No	No	No	No	No	No	No	No	No	Yes	Yes
Reasonable Alternative (RA)	#	No Build		RA1	RA2		RA3			RA4										RA5	RA6

NOTE: Transportation System Management (TSM)/Transportation Demand Management (TDM) and Mass Transit are considered stand-alone alternatives. During further alternatives development, elements of these may be included with the Reasonable Alternatives and/or the Preferred Alternative



Reasonable Alternatives

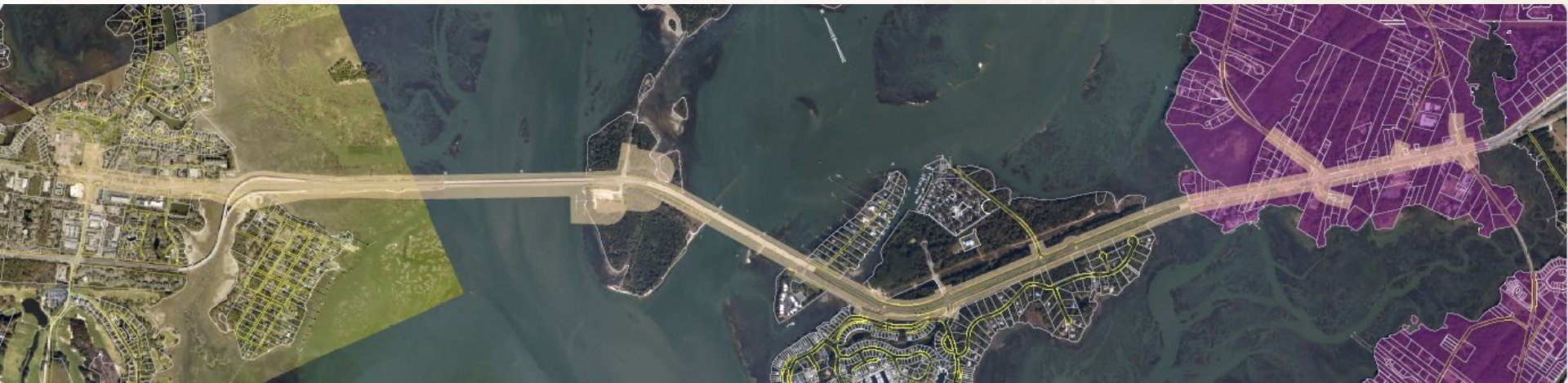


Legend

Alternative 2 (RA1) Corridor	Neighborhood	JONESVILLE	SOUTH POINTE
Alternative 3A (RA2) Corridor	BIG STONEY	LITTLE STONEY	SQUIRE POPE
Alternative 4A (RA3) Corridor	BUCKINGHAM	MARINERS COVE CLUB	TANGER 2
Alternative 4D (RA4) Corridor	HILTON HEAD HARBOR MARINA	MOSS CREEK PLANTATION	THE GATHERINGS
Alternative 7 (RA5) Corridor	HOG ISLAND	MOSS CREEK VILLAGE	THE LAKES @ EDGEWATER
Alternative 8 (RA6) Corridor	INDIGO RUN	OLD SOUTH VILLAS	WINDMILL HARBOUR
Pinckney Island National Wildlife Refuge			
Protected Lands			

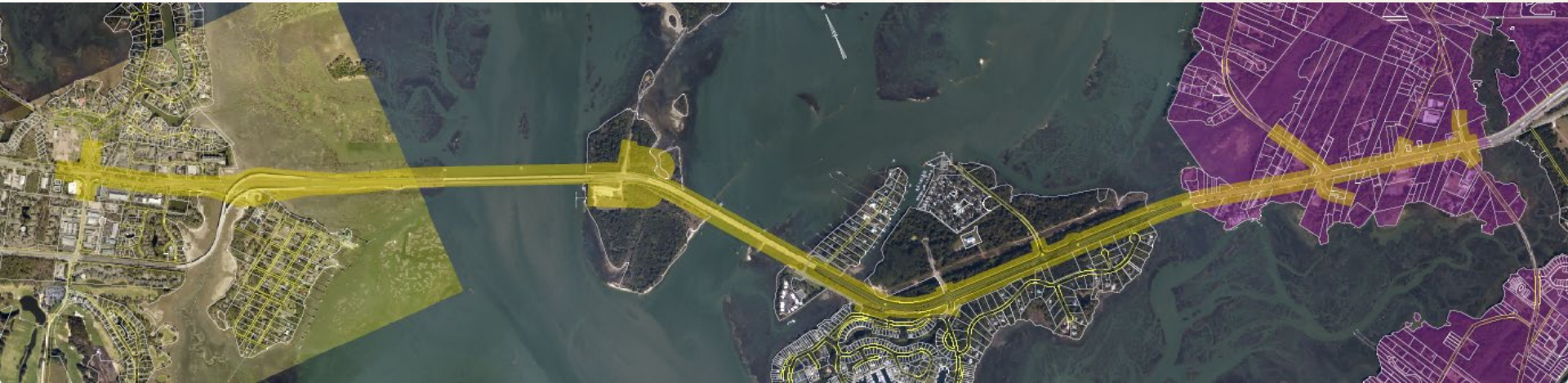
Alternative 1 (RA 1)

- Build new eastbound Mackay Creek bridge south of the existing bridge
- Recondition and widen existing westbound Mackay Creek bridge
- Recondition and possibly widen Skull Creek bridges
- Use existing alignment as much as possible



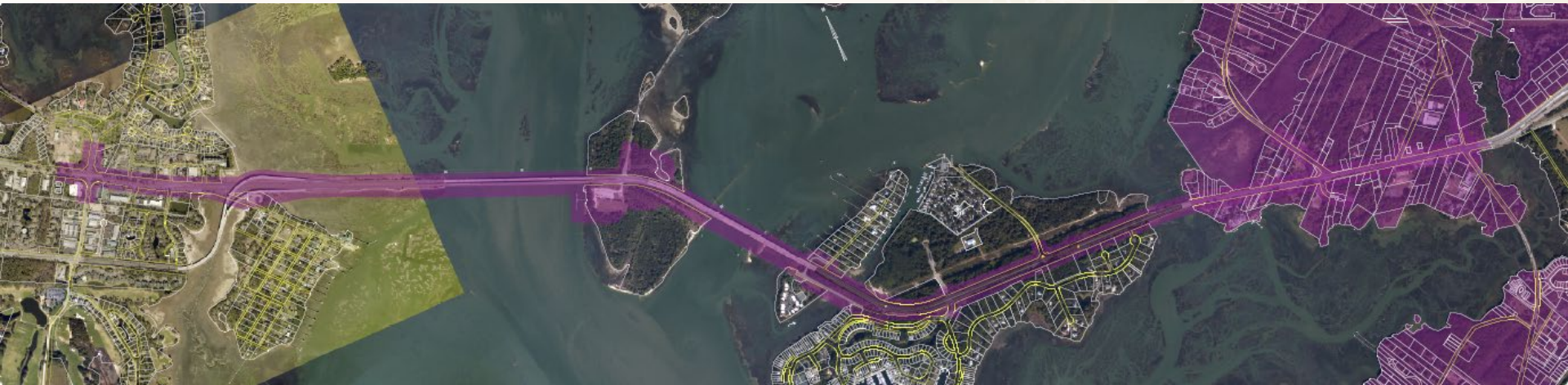
Alternative 2 (RA 2)

- Build a new bridge to the north of existing westbound Mackay Creek bridge
- Recondition existing westbound Mackay Creek bridge and convert to eastbound traffic
- Use newly constructed bridge for westbound traffic over Mackay Creek
- Recondition and possibly widen Skull Creek bridges



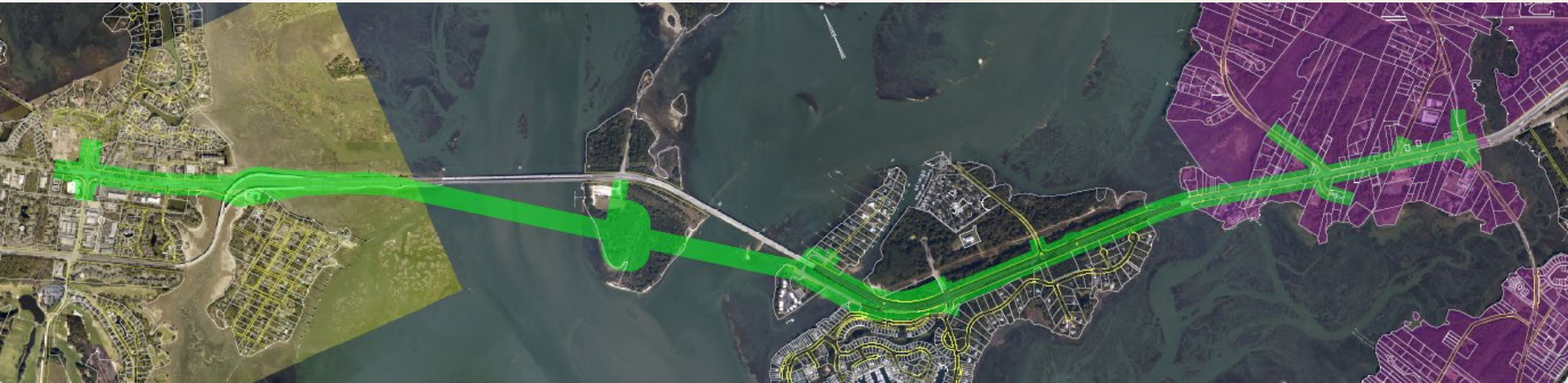
Alternative 3 (RA 3)

- Build 2 new eastbound bridges south of the existing alignments, one over Mackay Creek and one over Skull Creek
- Recondition and widen westbound Mackay Creek Bridge
- Recondition existing Skull Creek Bridges and convert to westbound traffic only



Alternative 4 (RA 4)

- Replace all 4 existing bridges with one new bridge immediately south of the existing alignment
- Build a new access to the Pinckney Island National Wildlife Refuge and CC Haigh Jr. Boat Ramp
- Use existing alignment east of the new bridges
- Remove existing bridges



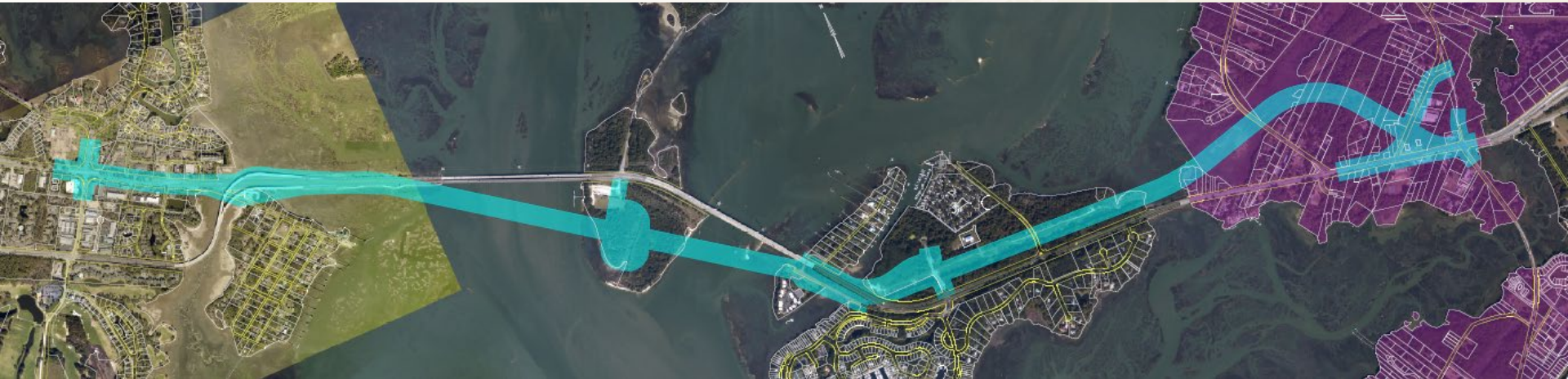
- Build 2 new eastbound bridges just south of the existing
- Recondition westbound bridges and widen in place
- Improve access to the Pinckney Island National Wildlife Refuge and CC Haigh Jr. Boat Ramp
- Utilize the existing transmission line easement for US 278 running from Jenkins Island through Spanish Wells Road

Alternative 5 (RA 5)



- Replace all 4 existing bridges with one new bridge just south of the existing US 278 alignment
- Build a new access to the Pinckney Island National Wildlife Refuge and CC Haigh Jr. Boat Ramp
- Utilize the existing transmission line easement running from Jenkins Island through Spanish Wells Road
- Remove existing bridges

Alternative 6 (RA 6)



POTENTIAL LANE CONFIGURATIONS



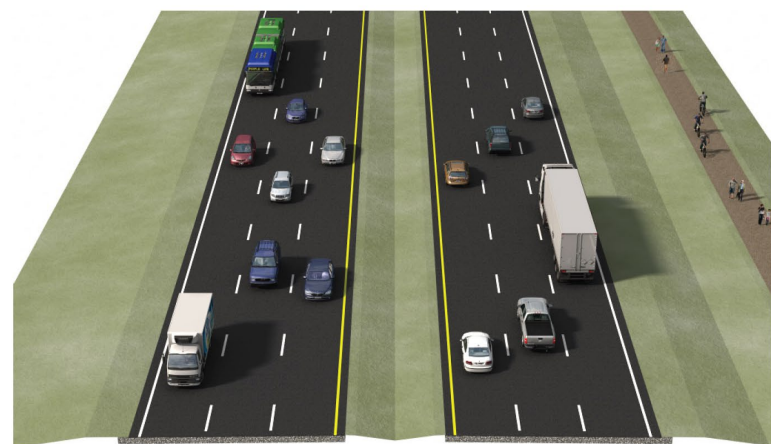
Bridge Section with Multi-use Path Option



Bridge Section without Multi-use Path Option



Curb & Gutter Section with Multi-use Path and Grass Median Option



Open Shoulder Section with Multi-use Path and Grass Median Option



US 278 CORRIDOR IMPROVEMENTS PROJECT CONTACT

If you are interested in staying up-to-date with project updates, please leave your name and email address below.

Name	Email	Zip Code
Herbert Fells	herbertfells@att.net	29926
Tim Scharoid	tscharoid@yahoo.com	29926
Gray Smith	g.smith@arborresearch.com	29926
Sharon Pokojni	spokojni@aol.com	29928
Charles McNear	chuckmcnear@earthlink.net	29926

NOTE: Information provided, including name and address, will be published and is subject to disclosure under the Freedom of Information Act.

US 278 CORRIDOR IMPROVEMENTS PROJECT CONTACT

If you are interested in staying up-to-date with project updates, please leave your name and email address below.



Name	Email	Zip Code
Juliana Smith	julianas@sccl.org	29902
Joan Kinne		29928
Diederik Advocaat	gdaadvocaat@aol.com	29928
Tom O'Saus	TCOSAUS@aol.com	29926
Rosary Stokes	rhiguel@gmail.com	29928
Zara Y/Israel	zrahay@sccl.org	29926
Elizabeth B. Yisrael	haham@sccl.org	29926
Pat Zeke	PatriciaM2014@gmail.com	29932
Maryanne Wilcox	MAEWILCOX@gmail.com	29926
Thomas Barnwell Jr	thomasbarnwell@yahoo.com	29926
Lesley Raymond Dumas		29928
Skip Holcomb		34112
Henry Sanders	henrys@hays.org	29926
Phyllis Deiter	Phyllisina.girl@gmail.com	29926

NOTE: Information provided, including name and address, will be published and is subject to disclosure under the Freedom of Information Act.



US 278 CORRIDOR IMPROVEMENTS PROJECT CONTACT

If you are interested in staying up-to-date with project updates, please leave your name and email address below.

Name	Email	Zip Code
Jim SNEDEKER		29910
Rita Fryer	rioribasc@gmail.com	29910
Terry Hoffmann	thoff280@yahoo.com	29910
Colleen Coffey		29910
John & Christine Hallman	HEATHERMANDEB@GMAIL.COM	29924
David Johnson	deingc7@gmail.com	29928
Bruce Bunnage		29928
John Floyd	joff0123@yahoo.com	29926
Lindsey Morse	morsellnsey1@gmail.com	29926
Tom Cook	THOMASCOOK@ATT.NET	29924
Harve Gabick	CECER HARVEY @GMAIL	29926
John Witherspoon	WITHERSPOON, JOHN K @GMAIL.COM	29926
Bob Thompson	RTHOMW23@Yahoo.com	29 29926

NOTE: Information provided, including name and address, will be published and is subject to disclosure under the Freedom of Information Act.

US 278 CORRIDOR IMPROVEMENTS PROJECT CONTACT

If you are interested in staying up-to-date with project updates, please leave your name and email address below.



Name	Email	Zip Code
Luke Leslie	lukeleslie@gmail.com	09926
Dicki Dick King	dickidickking@gmail.com	29926
Nancy Protheroe	niprotheroe@gmail.com	29928
Sandra Scruggs	srs02671@gmail.com	29926
Kau Kau		29924
Margie Vanhoser	wakepmargie22@gmail.com	29926
John F Stewart	Neat Stewart@gmail.com	29926
Johanna Reitter	johannafranta@yahoo.com	29926
Abdul El-Amin	aminabdulbellsouthnet	29926
Sue Mehruker	monnie@yahoo.com	29926
Georg Mehruker	gmuic@yahoo.com	29926
Cardyn Grant		29926

NOTE: Information provided, including name and address, will be published and is subject to disclosure under the Freedom of Information Act.

US 278 CORRIDOR IMPROVEMENTS PROJECT CONTACT

If you are interested in staying up-to-date with project updates, please leave your name and email address below.



Name	Email	Zip Code
DARRIN SHOEMAKER	darrins@hilltonheadislandsc.gov	29928
SAMUEL GROSS	sggross@scad.edu	29910
ANDY TUISDALE	andytuisdale@gmail.com	29926
THOMAS O'SHAK		29926
Coleman Paterson	chp@hollisest.com	29928
Emory S. Campbell		29928
Alex Brown	alex@camphilltonhead.com	29926
Carping Johnson	FAMJOHNSON@msu.com	29928
ALMFA	rmcfedbcgw.net	29907
Alan Robinson	ALROK@JUNIOR@MHI.COM	29928

NOTE: Information provided, including name and address, will be published and is subject to disclosure under the Freedom of Information Act.

[illegible]

NOTE: Information provided, including name and address, will be published and is subject to disclosure under the Freedom of Information Act.