

US 278 Corridor Improvements

Stakeholder Meeting

March 31, 2021





Project Management



Agenda

- 1 Project Management/Status Update
- 2 Community Impacts & Enhancements
- 3 Next Steps
- 4 Public Hearing Engagement Methods



Purpose & Need

The purpose of this project is to address structural deficiencies at the existing eastbound Mackay Creek bridge and reduce congestion along US 278 from Moss Creek Drive to Spanish Wells Road.



**Structural
Deficiencies**



Congestion



---Public Engagement---



The NEPA Process

Start the Environmental Assessment

Public Information Meeting **1**

Perform Technical Studies **2**

Develop Alternatives **3**

Analyze Alternatives **4**

Second Public Information Meeting **5**

Develop Preferred Alternative **6**

Prepare Environmental Assessment **7**

Public Hearing **8**

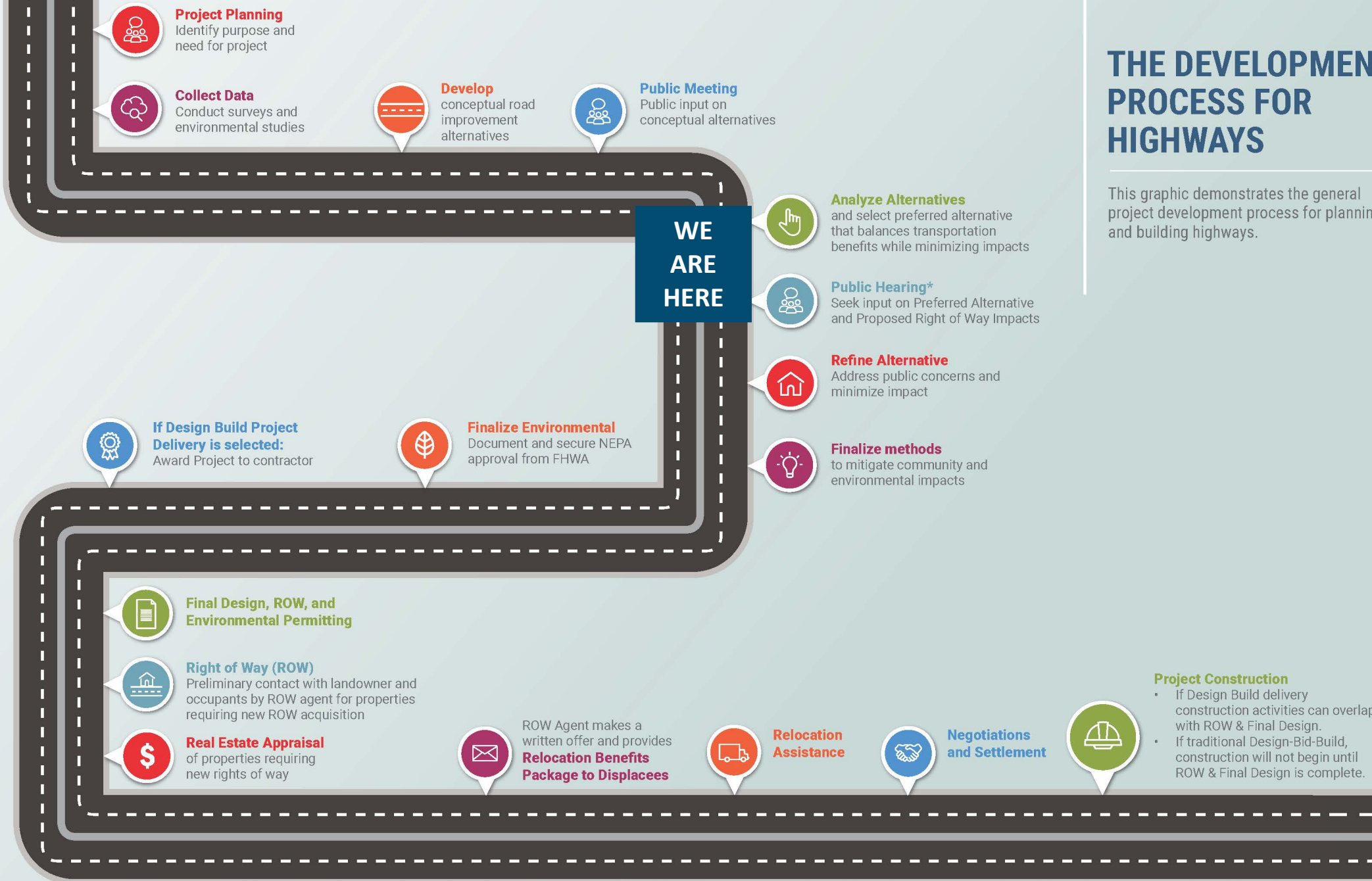
Revise Alternative **9**

FHWA Decision **10**

Public Hearing: Summer 2021
Pending FHWA Approval

THE DEVELOPMENT PROCESS FOR HIGHWAYS

This graphic demonstrates the general project development process for planning and building highways.



*Process depicted on this graphic is for projects being developed under an Environmental Assessment or Environmental Impact Statement; smaller projects developed under a Categorical Exclusion do not require a Public Hearing.

THE DEVELOPMENT PROCESS FOR HIGHWAYS

This graphic demonstrates the general project development process for planning and building highways.

Finalize methods...
to mitigate community and environmental impacts

WE ARE HERE

Project Planning
Identify purpose and need for project

Collect Data
Conduct surveys and environmental studies

Develop
conceptual road improvement alternatives

Public Meeting
Public input on conceptual alternatives

Analyze Alternatives
and select preferred alternative that balances transportation benefits while minimizing impacts

Public Hearing*
Seek input on Preferred Alternative and Proposed Right of Way Impacts

Refine Alternative
Address public concerns and minimize impact

Finalize methods
to mitigate community and environmental impacts

If Design Build Project Delivery is selected:
Award Project to contractor

Finalize Environmental
Document and secure NEPA approval from FHWA

Final Design, ROW, and Environmental Permitting

Right of Way (ROW)
Preliminary contact with landowner and occupants by ROW agent for properties requiring new ROW acquisition

Real Estate Appraisal
of properties requiring new rights of way

ROW Agent makes a written offer and provides **Relocation Benefits Package to Displacees**

Relocation Assistance

Negotiations and Settlement

Project Construction

- If Design Build delivery construction activities can overlap with ROW & Final Design.
- If traditional Design-Bid-Build, construction will not begin until ROW & Final Design is complete.

*Process depicted on this graphic is for projects being developed under an Environmental Assessment or Environmental Impact Statement; smaller projects developed under a Categorical Exclusion do not require a Public Hearing.

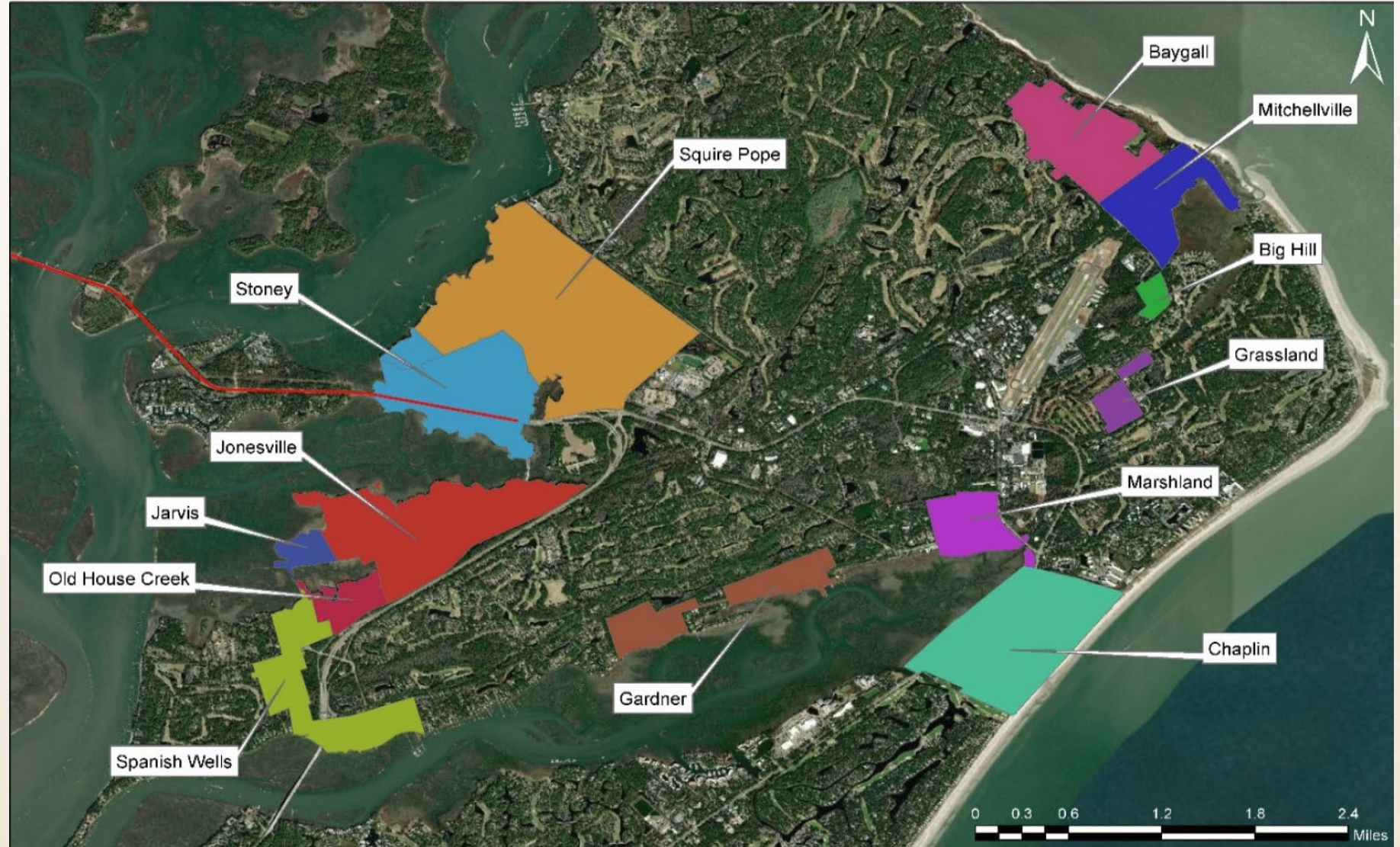


Community Impacts & Enhancements



Potential Community Impacts

- 0 Residential Displacements
- 2 Commercial Displacements
- Impacts anticipated to the Stoney Community - Recently classified as a Traditional Cultural Property (TCP)



Traditional Cultural Property (TCP) Analysis

Suggests Stoney remains central to the Gullah identity:

- Long history of Black landownership
- As a cultural gateway to the island
- As a place of progress, prosperity, and education for the island's Black community



What is a Traditional Cultural Property?

A subset of historic properties associated with cultural practices, traditions, beliefs, lifeways, arts, crafts, and social institutions of any living community - SHPO

Stoney & Community Engagement



6 meetings with Stoney Community to discuss Potential Impacts & Community Enhancements



1-on-1 meetings with potentially impacted property owners (*underway*)



Stoney Community Enhancements

Potential Stoney Community Location Renderings



Stoney Community Enhancements: Gateway Signage

Potential Stoney Community Location Renderings

Adjacent to the Crazy Crab
(Entering Hilton Head Island)



Stoney Community Enhancements: Gateway Signage

Potential Stoney Community Location Renderings

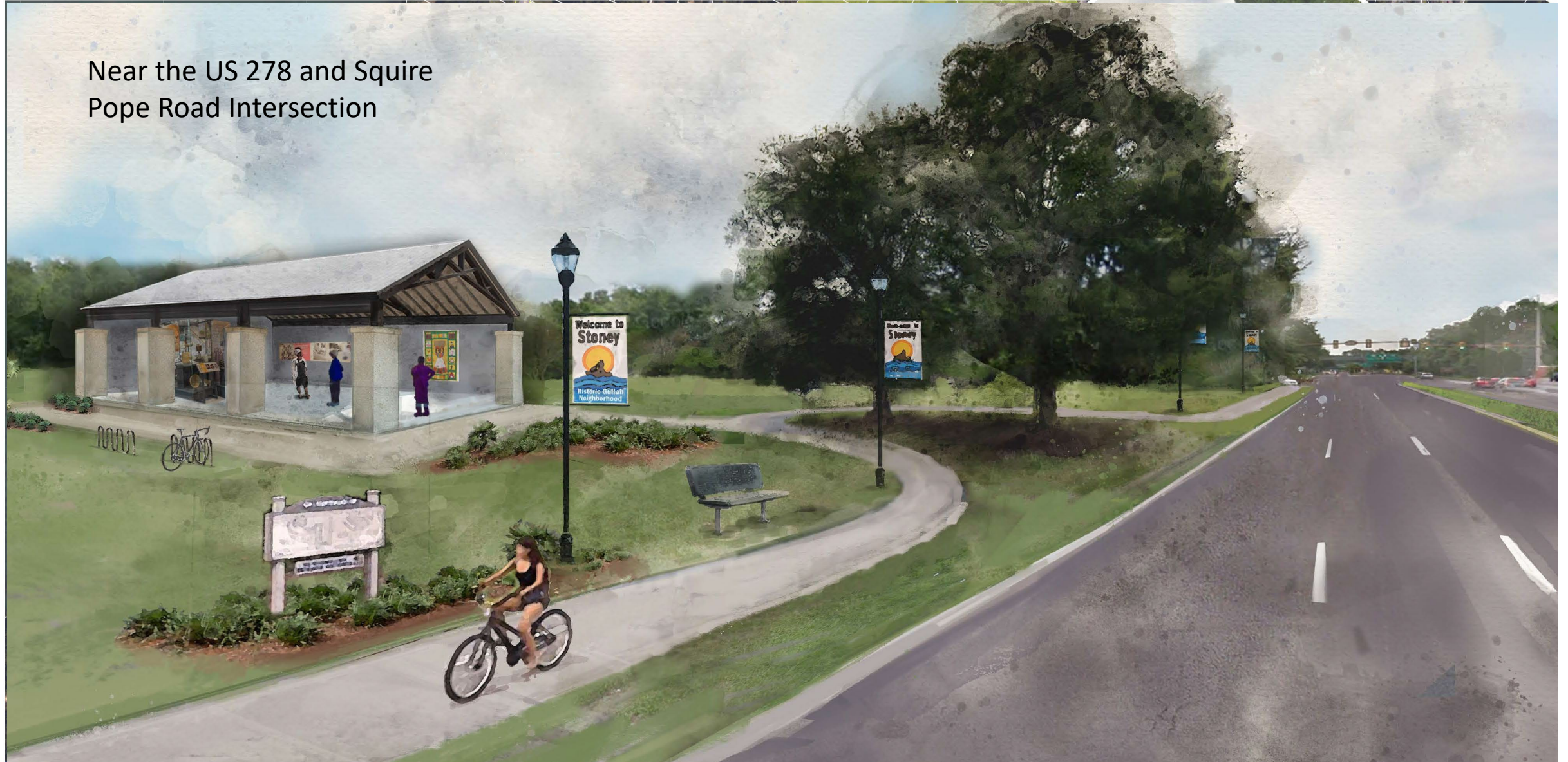
Near Spanish Wells Road
(Exiting Hilton Head Island)



Stoney Community Enhancements: Pavilion + Placemaking

Potential Stoney Community Location Renderings

Near the US 278 and Squire
Pope Road Intersection



Stoney Community Enhancements: Access

Jenkins Island Cemetery Access Road



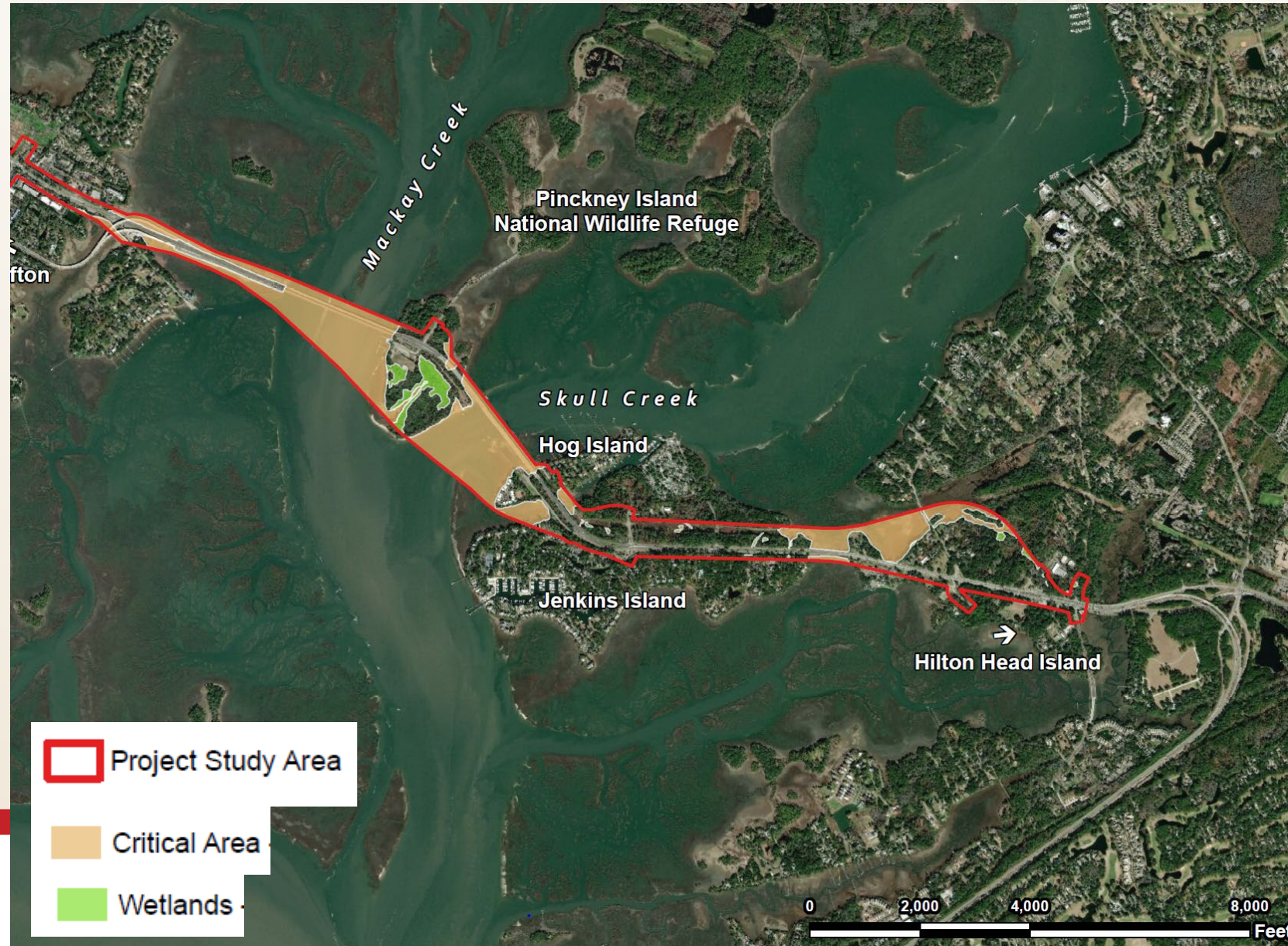
Stewart Family Safety Access Road



Potential Wetland & Stream Mitigation



- Multiple mitigation banks are available to provide mitigation services
 - Salt Marsh: Clydesdale Mitigation Bank or Murray Hill Mitigation Bank
 - Freshwater Wetlands: Sweetleaf Swamp Mitigation Bank
- If mitigation credits are not available for purchase Permittee Responsible Mitigation (PRM) is an option
 - SCDOT will investigate on-site & off-site PRM within the project watershed





Next Steps



Squire Pope and Jenkins Island Intersections

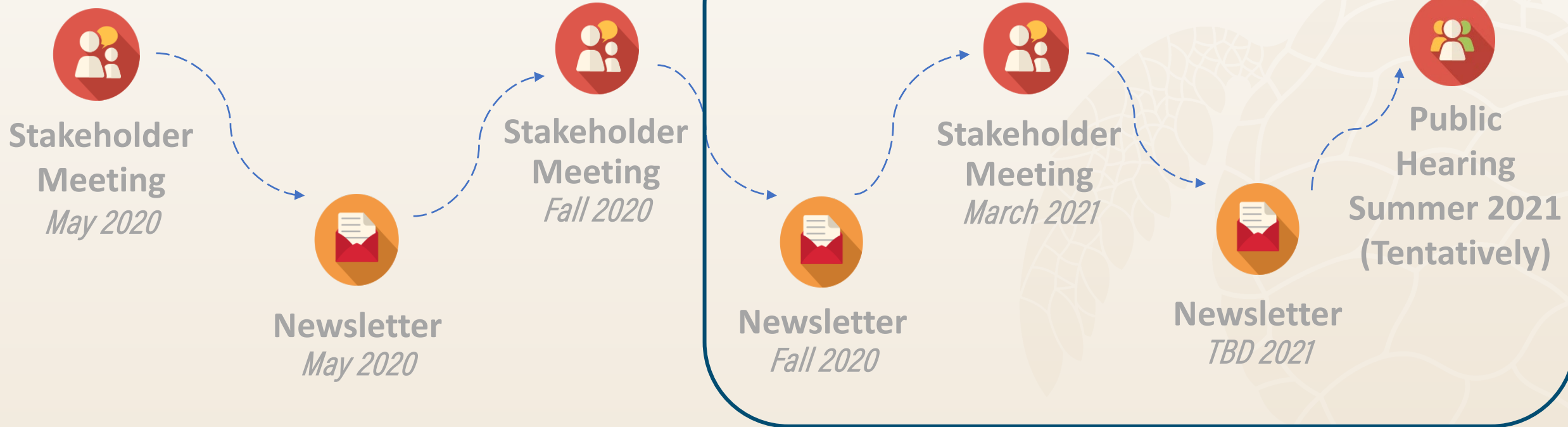
Understanding Next Steps



- Independent Review
- Process for Finalization



Upcoming Ways to Engage



Public Hearing

Ideas to Engage the Public During COVID-19

How should our plan for engagement change as we move the public hearing to the summer?

Verbal Comments on the Project Hotline

On-Demand Online Public Hearing webpage

On-Demand Questions Answered on the Project Hotline & Email

Meaningful Input

In-Person Appointments at Mobile Office Hours

In-Person by appointment at an Information/Comment Session

In the Mail Information Packets mailed by request



Contact



www.SCDOT278Corridor.com



info@SCDOT278Corridor.com



Facebook.com/SCDOT278Corridor



@SCDOT278Corridor



Craig Winn, PE, CFM
Project Manager
SCDOT





Questions?

