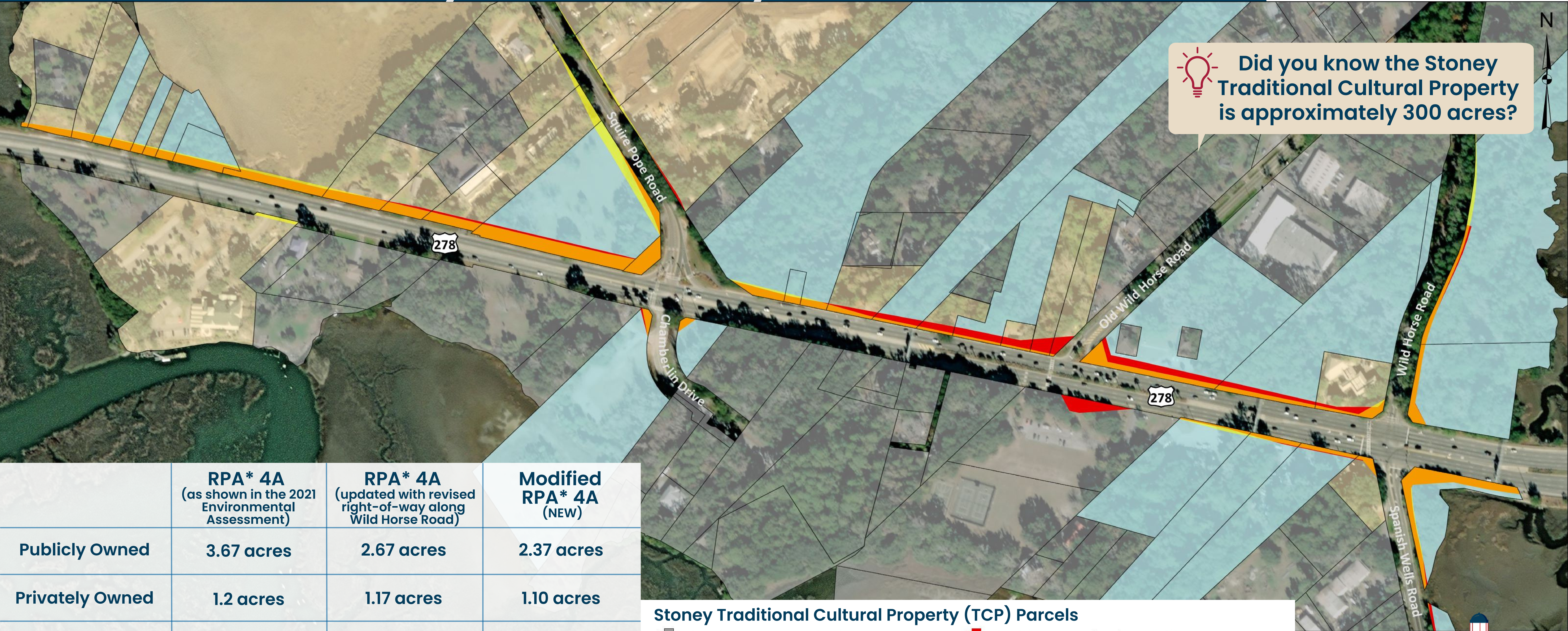


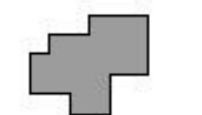

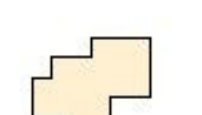



Comparison of Right-of-way (ROW) Impacts within the Stoney Community

💡 Did you know the Stoney Traditional Cultural Property is approximately 300 acres?



	RPA* 4A (as shown in the 2021 Environmental Assessment)	RPA* 4A (updated with revised right-of-way along Wild Horse Road)	Modified RPA* 4A (NEW)
Publicly Owned	3.67 acres	2.67 acres	2.37 acres
Privately Owned	1.2 acres	1.17 acres	1.10 acres
Total Right-of-way	4.87 acres	3.84 acres	3.47 acres
<i>*Recommended Preferred Alternative</i>	<i>Not shown on map</i>	<i>As depicted in red and orange on map</i>	<i>As depicted in yellow and orange on map</i>

Stoney Traditional Cultural Property (TCP) Parcels

-  Parcels Not Impacted by ROW
-  Publicly Owned Parcels Impacted by ROW
-  Privately Owned Parcels Impacted by ROW
-  ROW Necessary for the RPA 4A
-  ROW Necessary for the RPA 4A and Modified RPA
-  ROW Necessary for the Modified RPA

As of February 2022

